

Experiences from

Pasvik  Inari

Trilateral Park

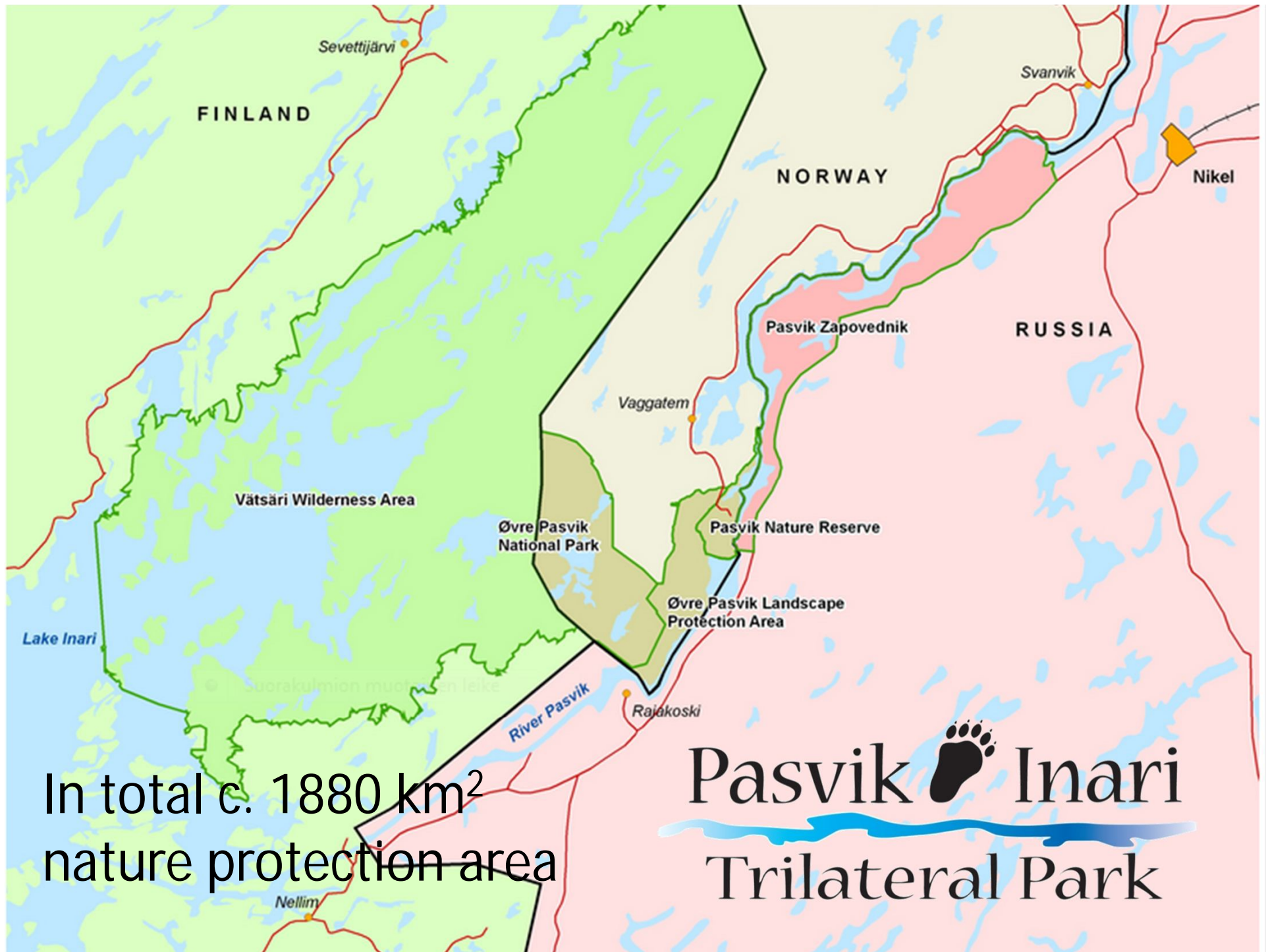
Workshop on Transboundary Cooperation
Regensburg EUROPARC General Assembly, October 2015

Riina Tervo, Marina Trusova and Tiia Kalske

Pasvik Inari Trilateral Park



Nature management, monitoring, environmental enlightenment and nature based tourism in the cross-border area of Norway, Russia and Finland



In total c. 1880 km²
nature protection area

Pasvik Inari

Trilateral Park



Borders separate. Nature unites!

Photo: Pasvik nature reserve and Pasvik Zapovednik along the Pasvik river, the Norwegian Russian border. Rolf E. Sch. Kollstrøm

Trilateral cooperation in action

- Nature protection and management - brown bear, golden eagle and water birds
- Environmental enlightenment - Environmental school, ecological camps and Phenology of the North Calotte
- Promotion of sustainable nature-based tourism - Piilola hiking trail and national trails, workshops and networking
- Networks and EUROPARC – Green Belt of Fennoscandia, Transboundary Parks -programme

Photos: Steinar Wikan, NIBIO/ Bioforsk and Gunnar Reinholdtsen



What TB cooperation bring to us

What does transboundary cooperation give to the managers of the protected nature territories:

- possibility to have broader themes for joint monitoring and nature research
- experience in adopting mutually acceptable solutions while having language, legal and cultural differences
- possibility to improve professional knowledge and skills as a result exchange of information with partners

What does transboundary cooperation give to the protected territories:

- possibility to use the partners' best practices while managing nature territories
- to build up a positive image of the protected nature territories in order to attract new visitors

Photo: Hans Tommervik - Pasvikprogramme

What TB cooperation bring to us

What does transboundary cooperation give to the region and public at large:

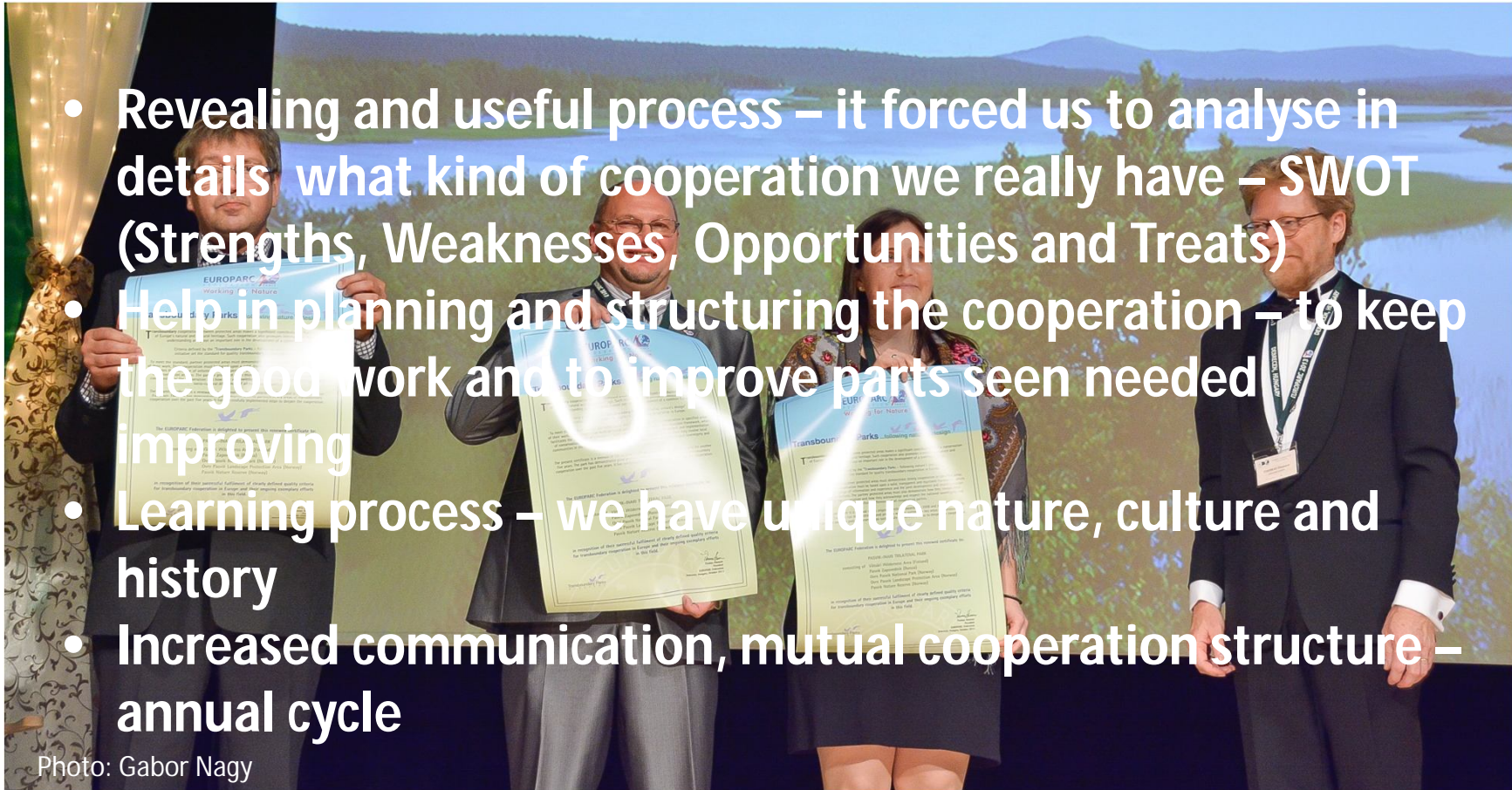
- promotion of sustainable nature tourism in the interest of the regional economy
- dissemination of knowledge about nature and care of it
- possibility to continue a constructive dialogue within the framework of Green Belt of Benelux and Europe regardless of political climate

Photo: Advisory Board meeting 2014, River Grønselva, Norway Rolf E. Sch. Kollstrøm

What EUROPARC certification bring to us

- Revealing and useful process – it forced us to analyse in details what kind of cooperation we really have – SWOT (Strengths, Weaknesses, Opportunities and Treats)
- Help in planning and structuring the cooperation – to keep the good work and to improve parts seen needed improving
- Learning process – we have unique nature, culture and history
- Increased communication, mutual cooperation structure – annual cycle

Photo: Gabor Nagy



What EUROPARC certification bring to us

- Joint vision and action plan – future steps...
- Helps in project planning and seeking funding
- Local involvement and meetings
- Quality standards and structures
- Visibility and network on European scale
- TransParcNet – wonderful!



Photo: Whopper Swans. Steinar Wikan

How to attract more TB areas – means we already have

- **High-standard annual meeting** = TransParcNet: experts having time to discuss with each other and network, interesting topics gone through in presentations, workshops or other active way of working with actual topics
- **Recommendations to the cooperation every 5 years** = m verifier(s) expert in tb-cooperation tells how the cooperation looks like and where are the chances for development. Point to look-up from own work and see, what kind of reactions the recommendations require.
- **Communication about TB-network!** Let's tell about transboundary park's programme to different audiences whenever possible



Photo: Pasvik-Inari valley, Juha Paso, Parks & Wildlife Finland

How to attract more TB areas – suggestions for to-dos

- High-quality and effective marketing materials including short videos, roll-ups, print-outs... showing, that we are an active European wide network
- Contact list of active-in-transboundary-work persons and their expertise
- Construction of common projects, which serve the transboundary parks and strengthen the network



Photo: Workshop for locals about sustainable development along GBF: making soap from reindeer fat. Kikka Laakso, Sámi Educational Institute

We are all in the same boat!

Thank you for your attention!



Advisory Board meeting and excursion
in 2010, Lemmenjoki Finland

Pasvik  Inari
Trilateral Park